



Checklist for Reducing Environmental Enforcement Risks

Ensure your compliance program and environmental management system (EMS) can verifiably protect against root causes of aggressive civil enforcement actions and criminal prosecutions for EHS legal and regulatory issues. Best practices include:

Demonstrating a strong corporate commitment to, and investment in, EHS compliance.

Staying abreast of changing EHS risks and spotting "red flags" or danger signs.

Conducting objective reviews of the effectiveness of environmental compliance programs and EMSs.

Maintaining up-to-date plans and procedures for responding to crises or government enforcement actions.

Having ready access to experienced lawyers who regularly conduct timely, cost-effective and focused internal investigations that uncover historical events as well as needed improvements to prevent recurrence.

Knowing when, and who, to call for cost-effective, timely and accurate EHS legal and regulatory guidance when questions arise.

Facilitating strong integration between in-house compliance and legal teams.

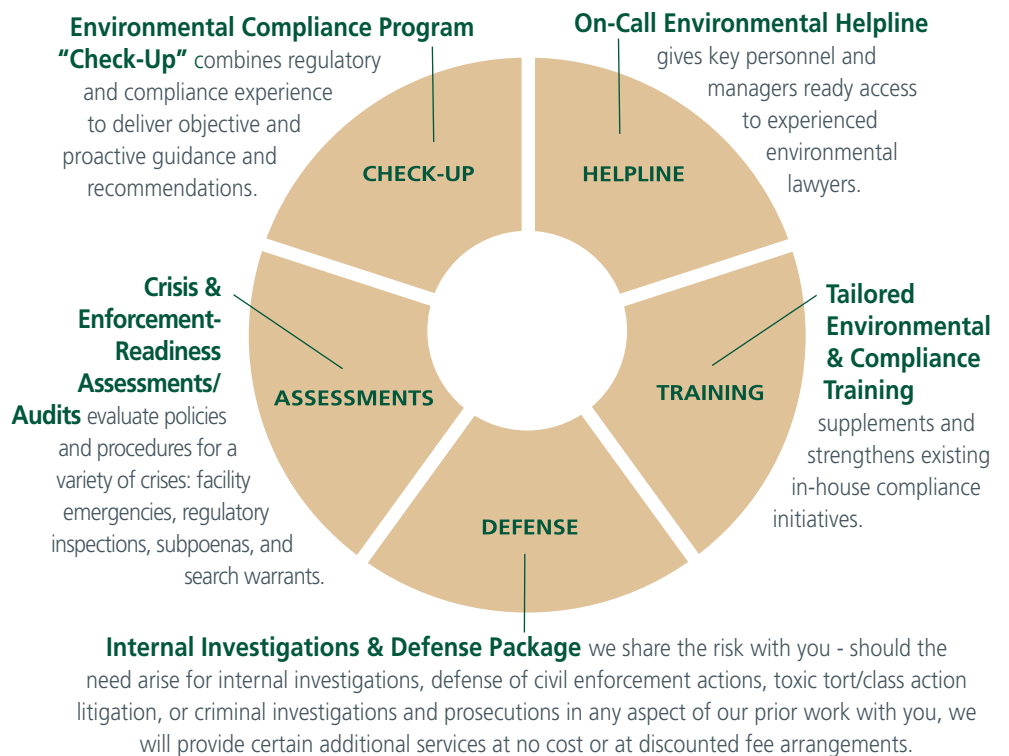
Providing effective, innovative, and practical training on general or specific topics in EHS law and compliance.

Prevent, Detect, Respond

Reacting to events only after they occur leaves companies vulnerable to broad and aggressive enforcement discretion. Regulators and other stakeholders increasingly expect strong self-governance, transparency, and "good corporate citizenship." Beveridge & Diamond (B&D) offers a suite of services to help clients **prevent, detect, and respond** to common, yet significant, environmental, health, and safety (EHS) enforcement risks.

We designed our approach to provide protection and defense in all phases of the EHS regulatory risk and enforcement spectrum – **before, during, and after** an incident. We understand the government's "playbook," as well as common mistakes companies can make.

Integrated Suite of Compliance & Enforcement Services





RISK-SHARING, MODULAR FEE AND SERVICE ARRANGEMENTS

SERVICE	TIMING/LOGISTICS
Crisis & Enforcement-Readiness Assessments/Audits	Facility-specific or company-wide, completed within first 3 months
Environmental Compliance Program "Check-Up"	Facility-specific or company-wide, completed within the first 6 months
On-Call Environmental Helpline	A set number of hours of environmental counseling per month (determined based on needs and company size)
Tailored Environmental & Compliance Training	<ul style="list-style-type: none"> • Monthly, quarterly, or annual trainings (determined based on need and company size) • In-person and/or by video/web • Customized or selected from a menu of topics
Internal Investigations & Defense Package	<ul style="list-style-type: none"> • Includes internal investigations, search warrant responses, and subpoena responses • Shared risk model and additional discounts if company has used other services

Available à la carte or as a package with fixed annual fees
(Determined based on need and company size)

OUR TEAM

Former government leaders, including:

- Assistant U.S. Attorney and Department of Justice Environmental Crimes Section Federal Prosecutor
- Criminal Investigator, Internal Revenue Service
- Deputy General Counsel, Massachusetts Department of Environmental Protection
- Deputy Associate Solicitor, Department of the Interior
- Assistant to California Governor for Toxic Substances Control
- Assistant Chief Counsel, Caltrans
- Maryland Assistant Attorney General
- New York Deputy Commissioner of Environmental Conservation
- Legal Counsel, Texas Commission on Environmental Quality

50 environmental and toxic tort litigators **plus** a nationwide team of 50 regulatory lawyers focused on issues arising under:

- Clean Air Act
- Clean Water Act
- Emergency Planning and Community Right-to-Know Act
- Endangered Species Act
- Federal Insecticide, Fungicide, and Rodenticide Act
- Hazardous Materials Transportation Act
- Minerals and Natural Resource Statutes
- Migratory Bird Treaty Act & Bald and Golden Eagle Protection Act
- Occupational Safety and Health Act
- Resource Conservation and Recovery Act
- Safe Drinking Water Act
- Toxic Substances Control Act

AUSTIN, TX BALTIMORE, MD BOSTON, MA ENGLEWOOD, NJ
 NEW YORK, NY SAN FRANCISCO, CA SEATTLE, WA WASHINGTON, DC

Strengthen Internal Compliance Programs, Reduce Risks, Survive Enforcement Storms

ABOUT BEVERIDGE & DIAMOND, P.C.

For over 40 years, Beveridge & Diamond has protected clients' interests in all areas of environmental law. In response to recent trends, government policies, and rising expectations of self-governance, we deploy comprehensive, cost-effective strategies to help clients reduce environmental, health, and safety enforcement risks, fulfill compliance obligations, strengthen environmental management systems and environmental compliance programs, and increase corporate value.

Visit www.bdlaw.com/compliance to view our Environmental Compliance & Enforcement Resource Center.

FOR MORE INFORMATION

Pete Anderson

Main 202.789.6014 | panderson@bdlaw.com
Cell 704.756.8800
Washington, D.C.

Megan Brillault

212.702.5414 | mbrillault@bdlaw.com
New York, NY

Maddie Kadas

512.391.8010 | mkadas@bdlaw.com
Austin, TX

David McCray

415.262.4025 | dmccray@bdlaw.com
San Francisco, CA

Evynn Overton

410.230.1335 | eoverton@bdlaw.com
Baltimore, MD

